

# S.06-401

Transport of products that require a very small transfer, runs on 7 mm nose bar.  
FDA approved.



**SCANBELT**  
...keeping industry moving...

## SUGGESTED INDUSTRIES

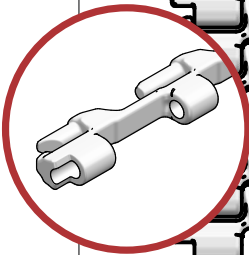
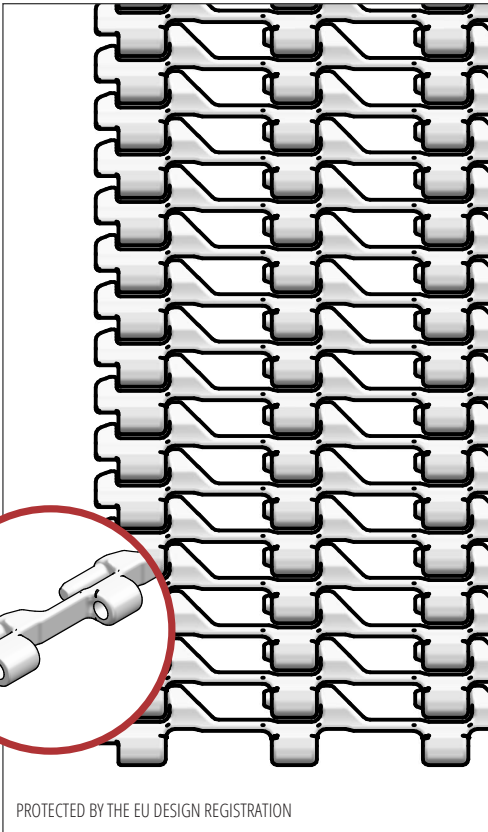


## STANDARD FEATURES

Belt surface	Open belt with a smooth surface
Open area	40 %. Biggest opening 4 x 8 mm.
Strength	Ideal choice for light transportation
Cleanability	Excellent. FSIS
Standard width	Increments of 40 mm, e.g. 200 mm, 240 mm etc.

## BELT DATA

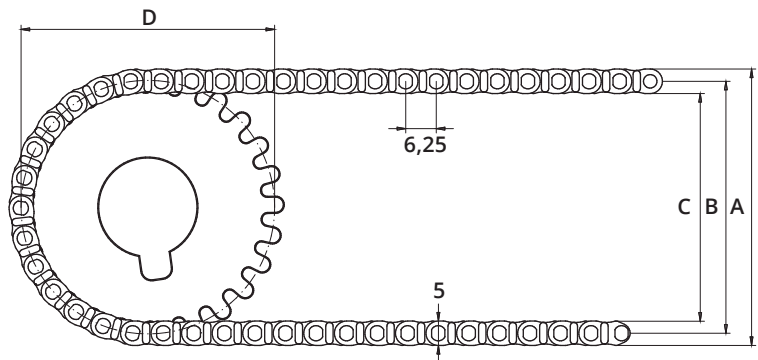
Belt materials	Temperature range		Max. belt pull kg/m of width	Belt weight kg/m <sup>2</sup>	Standard Colours
	Min.	Max.			
POM	- 43	95	250	2,8	Natural



PROTECTED BY THE EU DESIGN REGISTRATION

## ACCESSORIES

Type	mm
Flights	-
Scoop Flights	-
Bent Flights	-
Supported Flights	-
Flights fitted with a Round Top	-
Side Guards	-
Friction Top	-
Hold-downs	-



## SPROCKET DATA

A = Outside, B = Pitch, C = Inside, D = Pitch Circle Diameter

No. Teeth	A	B	C	D	Hub Width	Round Bore		Square Bore	
	mm	mm	mm	mm		mm	Inch	mm	Inch
20	45	40	35	40	6	20			
36	77	72	67	72	6	20 / 25	1	25	
48	100	95	90	96	6	20 / 25	1 / 1/4	25 / 40	1/2

\*Other sprockets are available upon request.