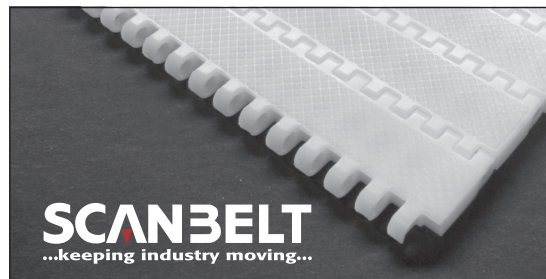


S.25-418

Ideal choice for medium-duty transportation etc. pallets, doors, panels etc. The rough top ensures a higher friction as well as extra wear surface. FDA approved.



SUGGESTED INDUSTRIES

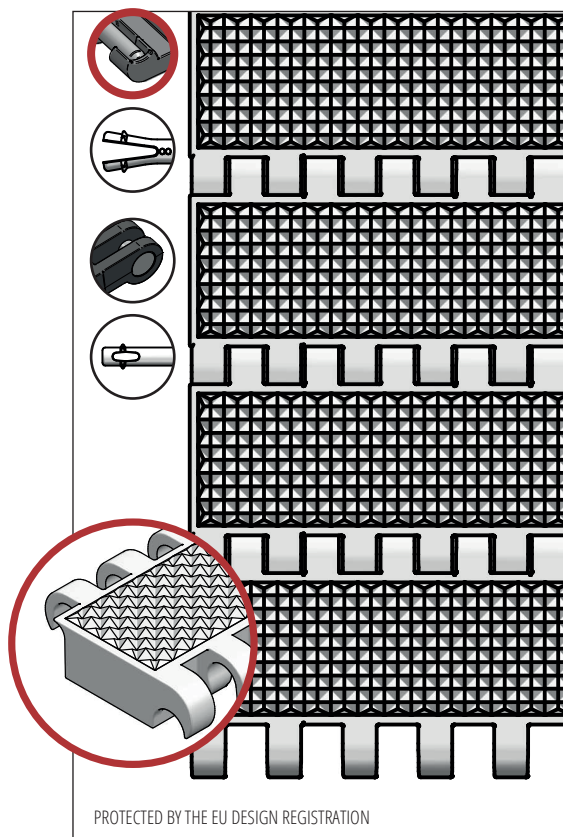


STANDARD FEATURES

| | |
|----------------|---|
| Belt surface | Rough top |
| Open area | Closed |
| Strength | Ideal choice for medium-duty transportation |
| Cleanability | Excellent. FSIS |
| Standard width | Increments of 10 mm, e.g. 100, 110 mm etc. |

BELT DATA

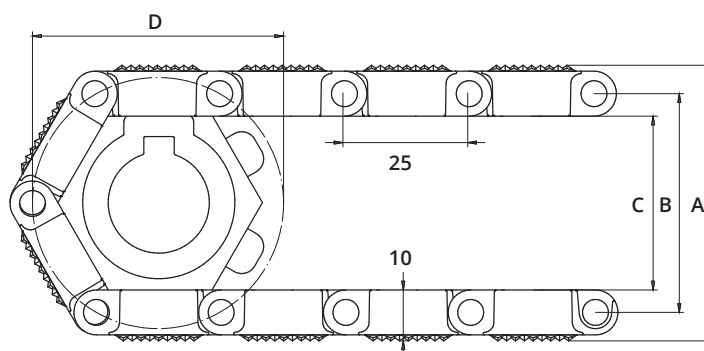
| Belt materials | Temperature range | | Max. belt pull kg/m of width | Belt weight kg/m ² | Belt weight kg/m ² w. steel rods | Standard Colours |
|----------------|-------------------|------|------------------------------|-------------------------------|---|------------------|
| | Min. | Max. | | | | |
| PE | - 73 | 66 | 900 | 6 | 11,5 | Blue/Natural |
| PP | + 5 | 100 | 1250 | 6 | 11,5 | Blue/White/Grey |
| POM | - 43 | 95 | 2400 | 8,5 | 14 | Blue/Natural |



ACCESSORIES

| Type | mm |
|---------------------------------|-------------|
| Flights | 3, 25*, 50* |
| Scoop Flights | - |
| Friction Flights | 25, 50 |
| Supported Flights | - |
| Flights fitted with a Round Top | Yes |
| Side Guards | 25, 50, 75 |
| Friction top | yes |
| Hold-downs | Yes |

*Modules can be supplied with a moulded indent of 40 mm.



SPROCKET DATA

A = Outside, B = Pitch, C = Inside, D = Pitch Circle Diameter

| No. Teeth | A | B | C | D | Hub Width | Round Bore | | Square Bore | |
|-----------|-----|-----|-----|-----|-----------|-------------------|--------|--------------|---------|
| | mm | mm | mm | mm | | mm | Inch | mm | Inch |
| 6 | 56 | 45 | 36 | 52 | 20 | 20 | | | |
| 8 | 73 | 62 | 53 | 66 | 20 | 20 / 25 | 1 | 25 | |
| 12 | 107 | 96 | 87 | 99 | 20 | 20 / 25 / 30 / 40 | 1 / 1¼ | 25 / 40 | 1½ |
| 20 | 173 | 162 | 153 | 164 | 35 | 20 / 25 / 30 / 40 | 1 / 1¼ | 25 / 40 / 60 | 1½ / 2½ |