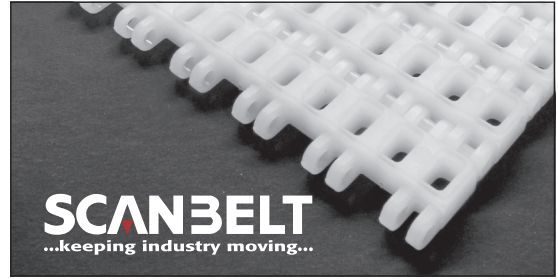


S.25-400 F/2

Great choice for transport of packed goods on a slightly inclined conveyor.
Ideal choice for medium-duty transportation.
FDA approved.



SUGGESTED INDUSTRIES



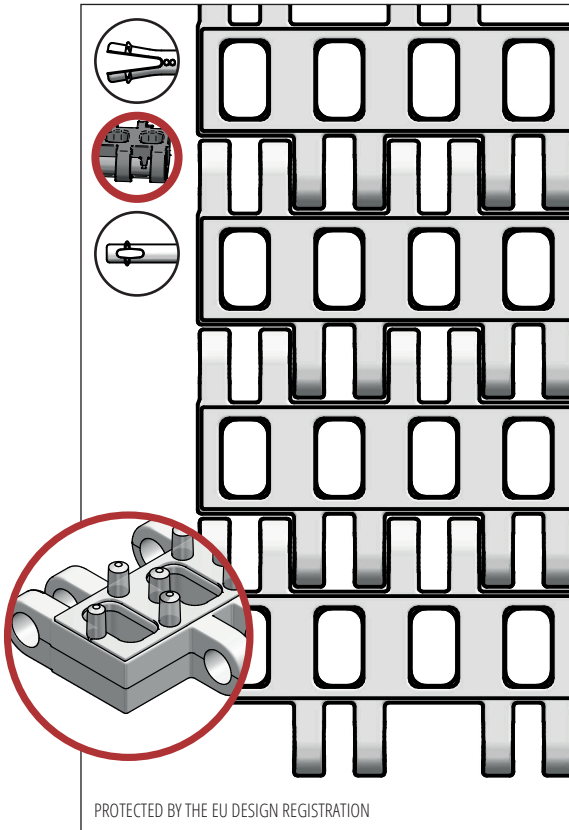
STANDARD FEATURES

Belt surface	Open belt with a smooth friction surface
Open area	29 %. Biggest opening 6 x 10 mm
Strength	Ideal choice for medium-duty transportation
Cleanability	Excellent. FSIS
Standard width	Increments of 25 mm, e.g. 100, 125 mm etc.
Non-standard width*	Increments of 12,5 mm, e.g. 100, 112,5 mm etc.

*Non-standard widths will have cut edge on one side.

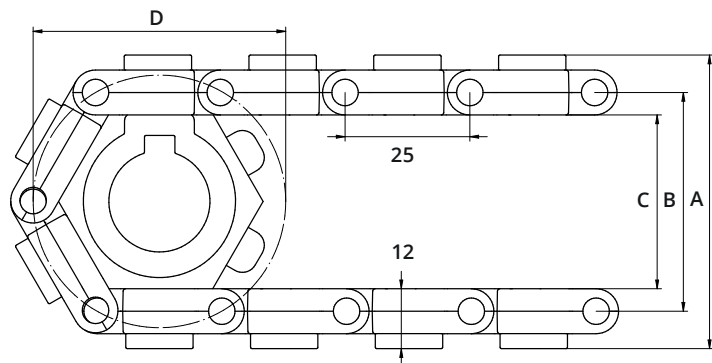
BELT DATA

Belt materials	Temperature range		Max. belt pull kg/m of width	Belt weight kg/m ²	Belt weight kg/m ² w. steel rods	Standard Colours
	Min.	Max.				
Copolymer	- 20	66	630	5	10,5	Natural



ACCESSORIES

Type	mm
Flights	3, 25, 50, 75
Scoop Flights	-
Bent Flights	-
Supported Flights	-
Flights fitted with a Round Top	Yes
Side Guards	25, 50, 75
Friction Top	Yes
Hold-downs	Yes



SPROCKET DATA

A = Outside, B = Pitch, C = Inside, D = Pitch Circle Diameter

No. Teeth	A	B	C	D	Hub Width	Round Bore		Square Bore	
	mm	mm	mm	mm		mm	Inch	mm	Inch
6	60	45	36	52	20	20			
8	77	62	53	66	20	20 / 25	1	25	
12	111	96	87	99	20	20 / 25 / 30 / 40	1 / 1¼	25 / 40	1½
20	177	162	153	164	35	20 / 25 / 30 / 40	1 / 1¼	25 / 40 / 60	1½ / 2½